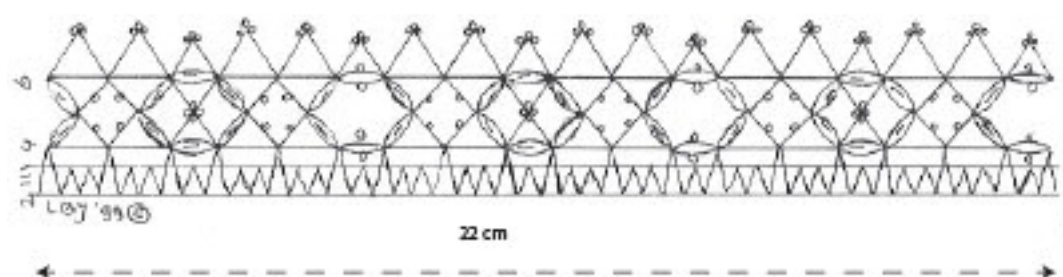


Week 30

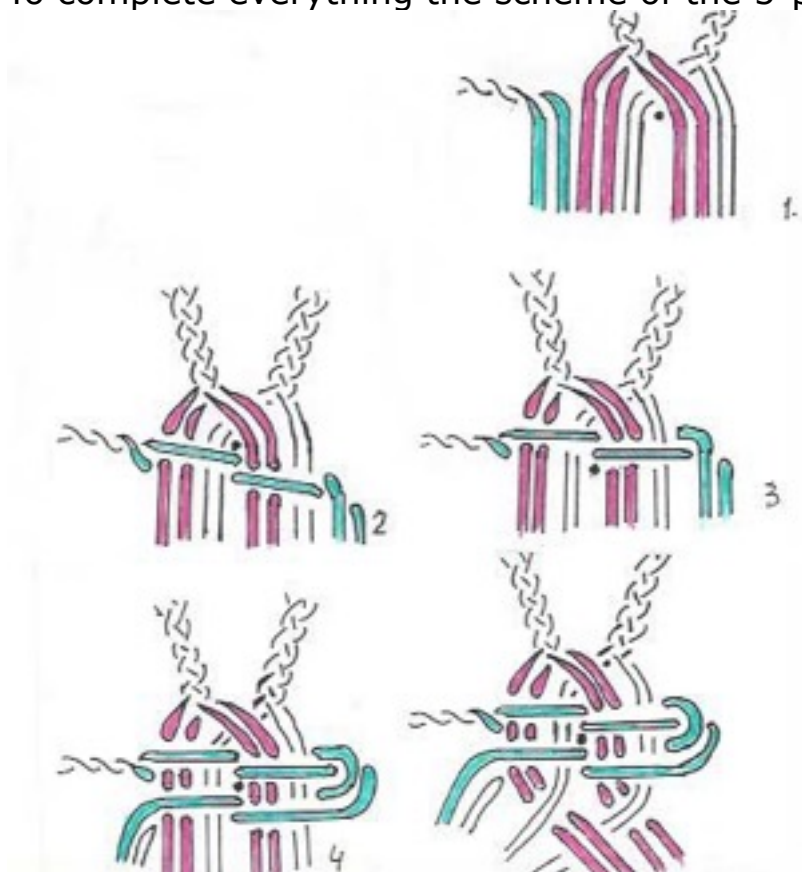
This week's edging is designed and made by Lia Baumeister. It includes everything of the Guipure, that makes this lace type so interesting: plaits, leaves, picots, 4-, 5- and 6-pairs crossings.

You will need 15 pairs of bobbins with linen 50/2 or similar.



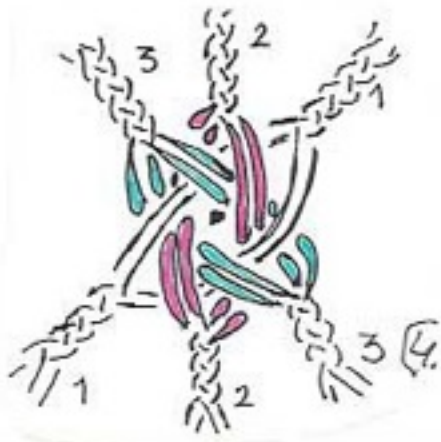
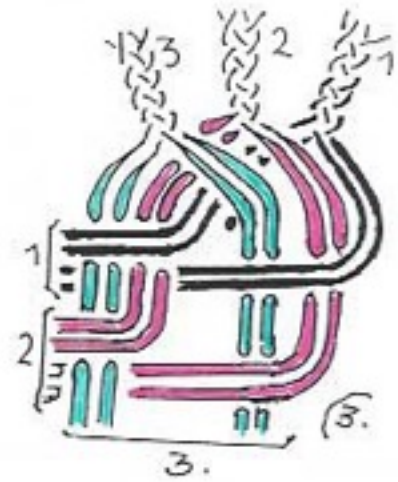
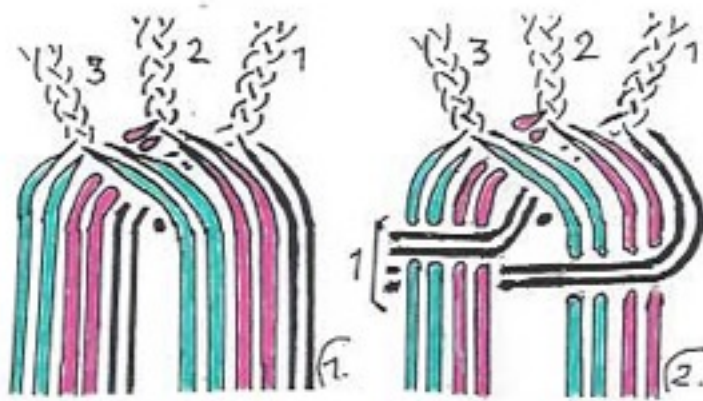
[You can download the pdf file for the pattern in the correct size.](#)

To complete everything the scheme of the 5-pairs crossing:



And the scheme of the 6-pairs crossing:

6-pairige vertikale Verbindung.



Have fun with this edging.