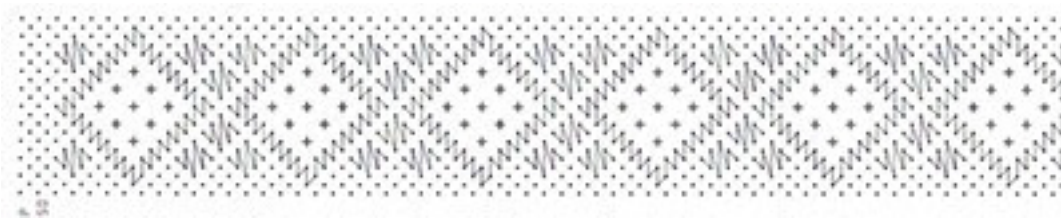
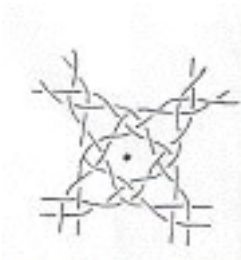


Week 21

This week we have the 4th Torchon lace, also designed by Bep Hoogerbrugge. Again a five hole ground, but the so-called old one. This insertion is also made by Christa van Schagen. You need 24 pairs of bobbins with linen 60/2 or similar.



This five hole ground is also worked with 4 pairs around 1 pin. The difference is that in stead of half stitches with the 2 pairs on the lefthand side and on the righthand side of the pin a whole stitch is made with these pairs. This makes the stitches more narrow and the holes between the stitches bigger. See the drawing below.



Have fun this week with this insertion.