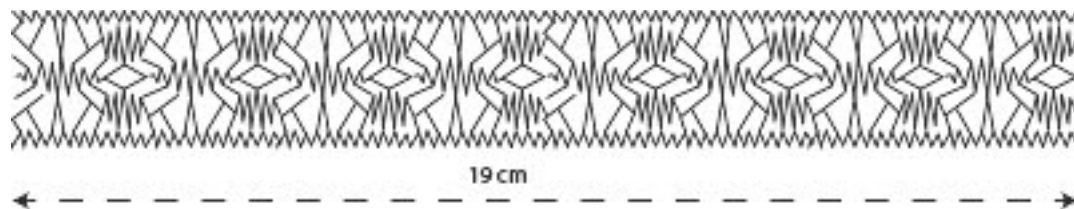


Week 12

This weeks insertion is for now the last Dutch lace. Certainly we will come back to this lace type, because we found several other Dutch laces. This insertion was originally drawn by my mother. If she also designed it? I don't know. I made a new pattern so that it is easier for us to read. You will need 16 pairs of bobbins with linen 110/2 or similar.



The workers of the outer braids make a false plait to the top and bottom of the rounds, connect them with the pairs of the plait or of the round in a 3-pairs crossing and go back completing the false plait. They do the same, when they go to the long plaits going from both sides of the lozenge to the rounds and to the long plaits going from the rounds to the lozenge in the middle.

We wish you again fun this week making this insertion. I really enjoyed it.